

Set Up Mobile Lite with PRI or SIP Trunks

Avaya IP Office Standard Mode

Telquest Tech Support

Mobile Lite will **ONLY** work with PRI or SIP Trunks.

Every extension (Digital, IP and Analog) can use Mobile Lite.

You will need at least 1 Button and maybe 2.

Set up Twinning on an extension...

Avaya IP Office Manager Standard R9-0 [9.0.400.965] [Administrator/Administrator]

File Edit View Tools Help

Standard R9-0 User 201 Extn201

IP Offices

- BOOTP (32)
- Operator (3)
- Standard R9-0
- System f
- Control Unit (4)
- Extension (10)
- User (13)
- Group
- Short Cod
- Servi
- RAS (1)
- Incoming Call I
- WAN Port (0)

User

- RemoteManager
- NoUser
- Extn201
- Extn202
- Extn203
- Extn204
- Extn205
- Extn206
- Extn207
- Extn208
- Jim Smith
- Dummy 888
- SIP8001

Extn201: 201

User Voicemail DND Short Codes Source Numbers Telephony Forwarding Dial In Voice Recording

Button Programming Menu Programming Mobility Group Membership Announcements Personal Directory

☐ Internal Twinning

Twinned Handset <None>

Maximum Number of Calls 1

☐ Twin Bridge Appearances

☐ Twin Coverage Appearances

☐ Twin Line Appearances

☒ Mobility Features

☒ Mobile Twinning

Twinned Mobile Number (including dial access code) 915618323801

Twinning Time Profile <None>

Mobile Dial Delay (secs) 2

Mobile Answer Guard (secs) 0

☐ Hunt group calls eligible for mobile twinning

☐ Forwarded calls eligible for mobile twinning

☐ one-X Mobile Client

☒ Mobile Call Control

☐ Mobile Callback

OK Cancel Help

Ready

1. Click here...

2. Select a User...

3. Click here...

4. Click here...

5. Click here...

6. Preprogrammed Telephone # to call...

Your Option...

7. Click here...

We are still in the same User...

Set up a “Twin On/Off” button....

The screenshot shows the Avaya IP Office Manager Standard R9-0 [9.0.400.965] [Administrator/Administrator] interface. The interface is divided into several panes. On the left, the 'IP Offices' pane shows a tree structure with 'Standard R9-0' selected. The 'User' pane shows a list of users, including 'Extn201'. The 'Ext201' pane shows a table of buttons and their actions. A yellow callout '1. Click here...' points to the 'Ext201' pane. A yellow callout '2. Double Click on a button...' points to the 'Twin' button in the 'Ext201' pane. A yellow callout '3. Name it...' points to the 'Label' field in the 'Edit Button' dialog. A yellow callout '4. Click here...' points to the 'Emulation' option in the 'Action' dropdown. A yellow callout '5. Click here...' points to the 'Twinning' option in the 'Action' dropdown. A yellow callout '6. Click here...' points to the 'Twinning' option in the 'Action' dropdown.

Avaya IP Office Manager Standard R9-0 [9.0.400.965] [Administrator/Administrator]

File Edit View Tools Help

Standard R9-0 User 201 Extn201

IP Offices

- BOOTP (32)
- Operator (3)
- Standard R9-0
- System (1)
- Line (5)
- Control Unit (2)
- Extension (10)
- User (13)
- Group (2)
- Short Code (7)
- Service (0)
- RAS (1)
- Incoming Call (1)
- WAN Port (0)

User

- RemoteManager
- NoUser
- Extn201
- Extn202
- Extn203
- Extn204
- Extn205
- Extn206
- Extn207
- Extn208
- Jim Smith
- Dummy 888
- SIP8001

Ext201

| Button ... | Label | Action |
|------------|------------|----------------|
| 1 | | Appearance |
| 2 | | Appearance |
| 3 | | Appearance |
| 4 | Night On | Set Hunt Group |
| 5 | Fwd Number | Forward Number |
| 6 | Fwd On | Forward Uncor |
| 7 | | |
| 8 | Twin | Twinning |
| 9 | | |
| 10 | | |
| 11 | | |
| 12 | | |
| 13 | | |

Edit Button

Button: 8

Label: Twin On/Off

Action: Twinning

Action Data:

- Dial
- Group
- User
- Emulation
- Advanced
- Appearance

Account Code Entry

- ACD Agent Statistics
- ACD Special Function Wait
- AD Special Functions
- AD Suppress
- Automatic Callback
- Automatic Intercom
- Call Forwarding All
- Call Park
- Call Park and Page
- Call Park To Other Extension
- Call Pickup
- Cancel Leave Word Calling
- Conference Meet Me

Dial In

- Voice Recording
- Personal Directory

Remove Edit... Copy Paste

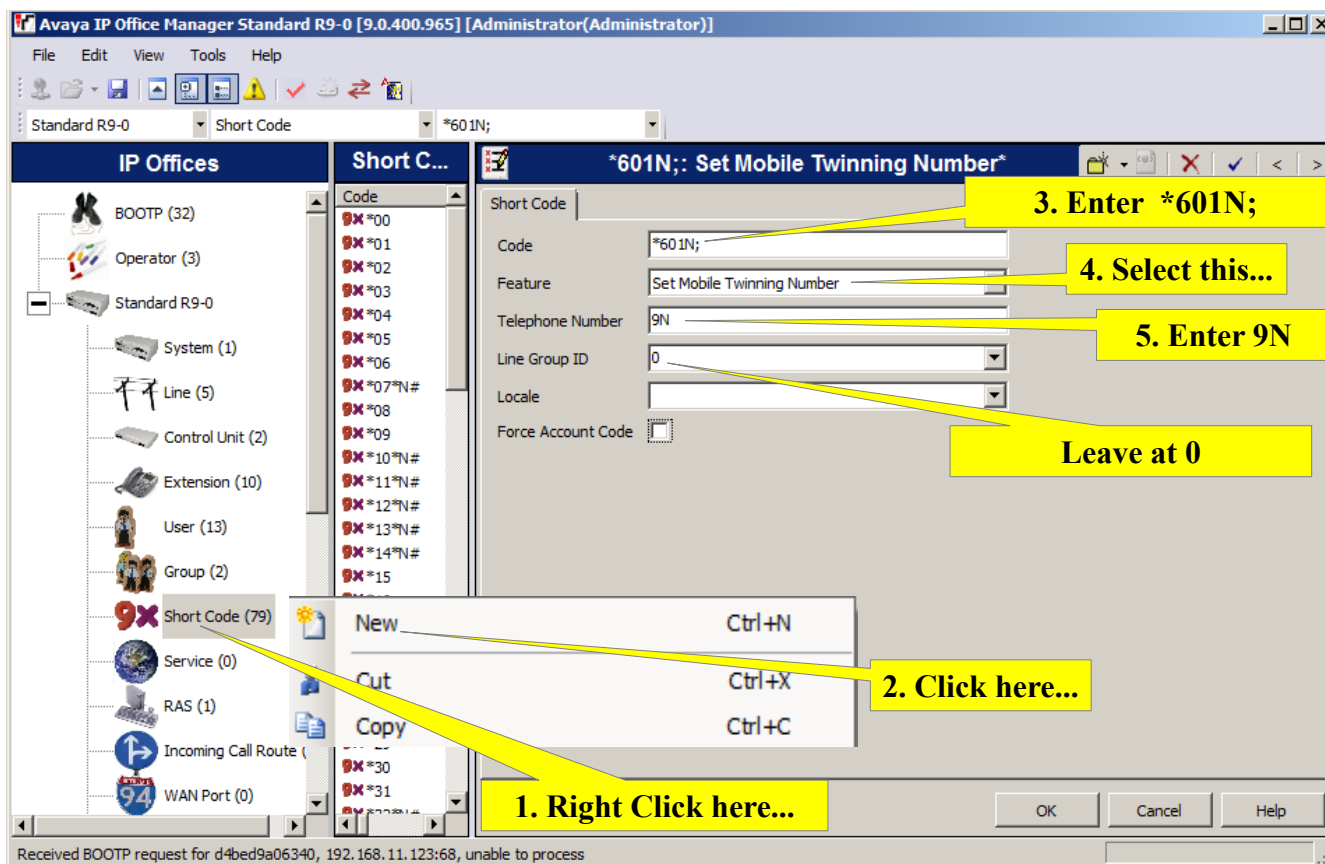
OK Cancel

Received BOOTP request for d4bed9a06340, 192.168.11.123:68, unable to process

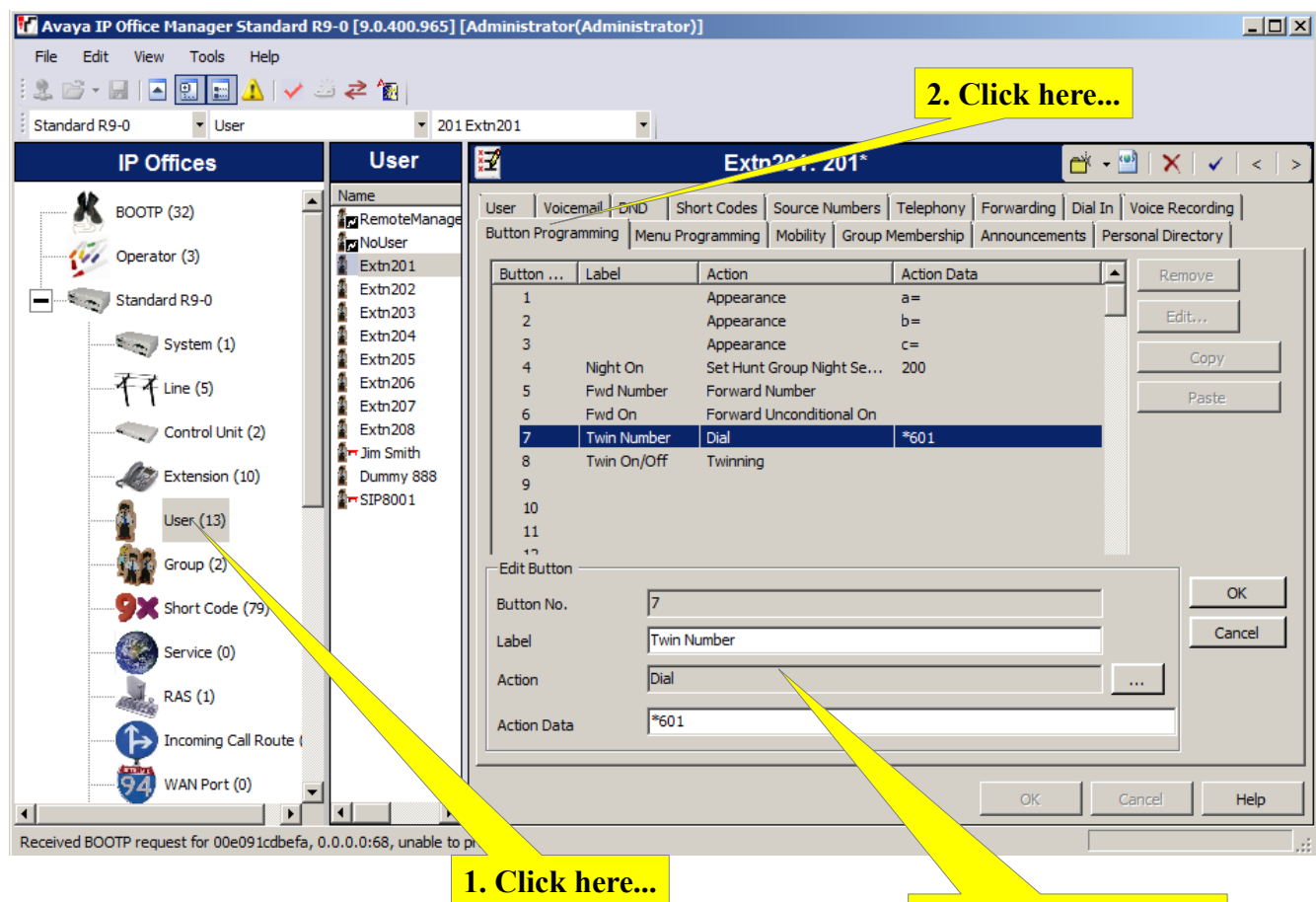
Save your changes to the KSU.

You only need to do this programming if you want the User to be able to change the Mobile Lite destination number:

Create a new Short Code like this:



We are going back to the same User as we did on Page 1:



Operation:

From a phone that has been set for Mobile Lite with a Preprogrammed Twinned Mobile Number:
(A preset number example is programed in on Page 1)

Press the “Twin On”

Calls to that extension will be sent to the Twinned Mobile Number.

From a phone that has been set for Mobile Lite without a Preprogrammed Twinned Mobile Number:
(No preset number has been programed in on Page 1)

Press the “Twin On”

Press the “Twin Number” button and dial the Twinned Mobile Number plus a # (POUND)
(No prefix like 9 is needed)

Calls to that extension will be sent to the Twinned Mobile Number.

While on a call, you can press ## and then call or transfer your call to another extension.